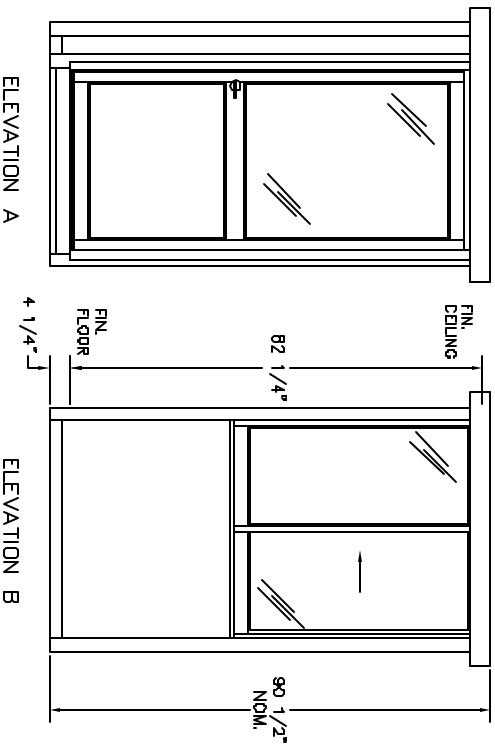


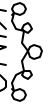
PLAN VIEW

DURALUMINUM MODEL 4848SW BUILDING NOTES :

- ① 100 AMP SINGLE PHASE 12 CIRCUIT LOAD CENTER W/MAIN BKR.
 - ② 115V DUPLEX, 230V OUTLET
 - ③ 34 WATT SURFACE MTD. FLUORESCENT LIGHT
 - ④ 22" DEEP SHELF
- * 3" OVERHANG EXTERIOR MEMBRANE ROOF
 - * 1- HEAVY DUTY ALUMINUM DOOR W/HALF GLASS AND LEVER LOCK
 - * GLAZING- CLEAR TEMPERED GLASS
 - * ALUMINUM TREAD PLATE FLOOR
 - * UL LABEL FOR COMPLIANCE WITH THE N.E.C.



NOTES:
 SLIDING DOORS AVAILABLE BOTH SIDES- SUFFIX DSL
 CASHIER WINDOW AVAILABLE IN DOOR- SUFFIX CSL

 PORTA-KING BUILDING SYSTEMS	4133 SHORELINE DRIVE 1-800-456-5464 FAX 314-291-2857 EARTH CITY, MISSOURI 63045 www.portaking.com
TITLE	DURALUMINUM MODEL 4848SW