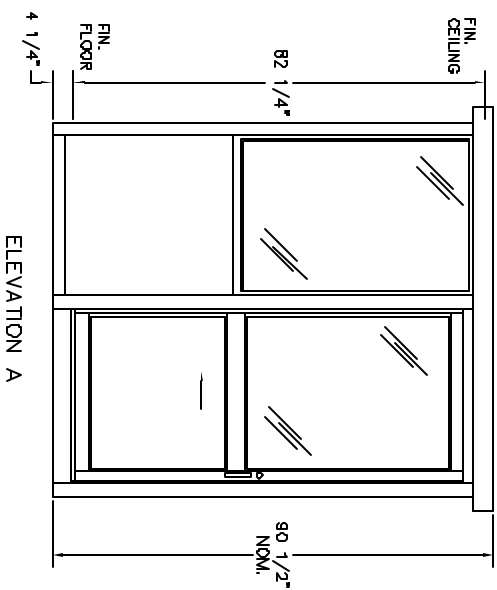


PLAN VIEW



ELEVATION A

DURALUMINUM MODEL 7648SL BUILDING NOTES :

- ① 100 AMP SINGLE PHASE 12 CIRCUIT LOAD CENTER W/MAIN BKR.
 - ② 115V DUPLEX, 230V OUTLET
 - ③ 34 WATT SURFACE MTD. FLUORESCENT LIGHT
 - ④ 22" DEEP SHELF
- * 3" OVERHANG EXTERIOR MEMBRANE ROOF
 - * 1- HEAVY DUTY ALUMINUM DOOR W/HALF GLASS AND ADA HANDLES
 - * GLAZING- CLEAR TEMPERED GLASS
 - * ALUMINUM TREAD PLATE FLOOR
 - * UL LABEL FOR COMPLIANCE WITH THE N.E.C.

NOTES:
 SLIDING DOORS AVAILABLE BOTH SIDES- SUFFIX DSL
 CASHIER WINDOW AVAILABLE IN DOOR- SUFFIX CSL
 SWING DOOR AVAILABLE IN REAR OF BOOTH- SUFFIX SW

PORTA-KING BUILDING SYSTEMS

4133 SHORELINE DRIVE EARTH CITY, MISSOURI 63045
 1-800-456-5464 FAX 314-291-2857 www.portaking.com

TITLE DURALUMINUM MODEL 7648SL