

IMPORTANT NOTE - VERIFY BOOTH DESIGN IS COMPATIBLE WITH ON SITE CONDITIONS FOR PROPER ACCESSIBILITY.

PLAN VIEW

NOTE: CLEAR DOOR OPENING TO BE 32"

DURALUMINIUM MODEL DA8866SL BUILDING NOTES:

- ① 100 AMP SINGLE PHASE 12 CIRCUIT LOAD CENTER W/MAIN BKR.
- ② 115V DUPLEX, 230V OUTLET
- ③ 34 WATT SURFACE MTD. FLUORESCENT LIGHT
- ④ 22" DEEP SHELF
- * 3" OVERHANG EXTERIOR MEMBRANE ROOF
- * 1- HEAVY DUTY ALUMINIUM DOOR W/HALF GLASS AND ADA HANDLES
- * GLAZING- CLEAR TEMPERED GLASS
- * ALUMINIUM TREAD PLATE FLOOR
- * UL LABEL FOR COMPLIANCE WITH THE N.E.C.



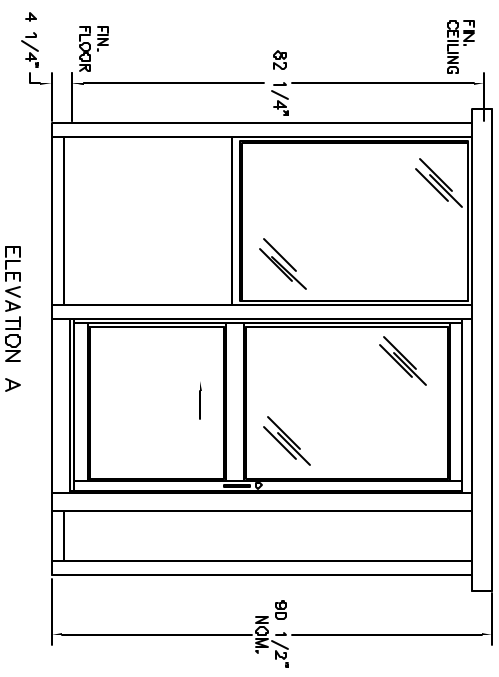
STANDARD FEATURES DESIGNED INTO BOOTH TO MEET ADA GUIDELINES.

- * MANEUVER WITHIN BOOTH - 60" DIAMETER
- * DOOR CLEARANCES - 32" CLEAR OPENING, 1/2" HIGH THRESHOLD
- * SHELF - 32" A.F.F.
- * CASHIER WINDOW - 33" A.F.F.
- * CEILING HEIGHT - 80" min.

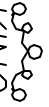
(ACCESSIBLE ROUTE TO BOOTH - BOOTH CAN BE DESIGNED TO MEET ON SITE CONDITIONS, EXAMPLE: DOOR LOCATION AND THRESHOLD HEIGHT)

NOTES:

- SLIDING DOORS AVAILABLE BOTH SIDES - SUFFIX DSL
- CASHIER WINDOW AVAILABLE IN DOOR - SUFFIX CSL
- SWING DOOR AVAILABLE IN REAR OF BOOTH - SUFFIX SW



ELEVATION A



PORTA-KING BUILDING SYSTEMS

4133 SHORELINE DRIVE EARTH CITY, MISSOURI 63045
 1-800-456-5464 FAX 314-291-2857 www.portaking.com

TITLE	DURALUMINIUM MODEL DA8866SL
-------	-----------------------------