

IMPORTANT NOTE - VERIFY BOOTH DESIGN IS COMPATIBLE WITH ON SITE CONDITIONS FOR PROPER ACCESSIBILITY.

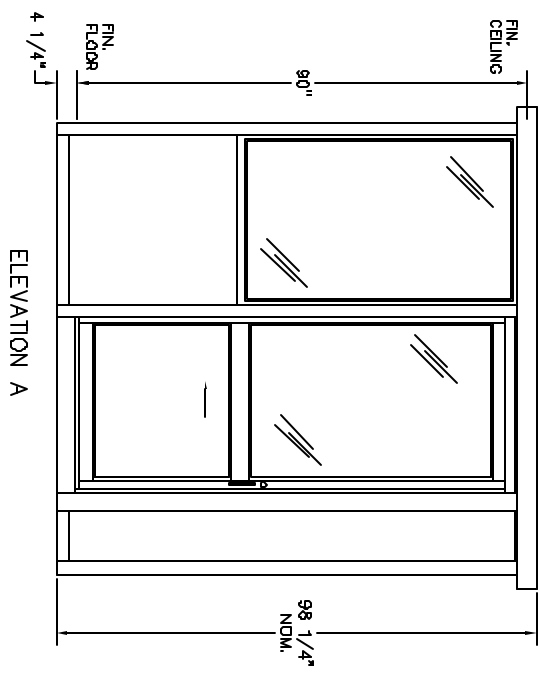
PLAN VIEW

DURALUMINIUM MODEL DA8866SL BUILDING NOTES :

- ① 100 AMP SINGLE PHASE 12 CIRCUIT LOAD CENTER W/MAIN BKR.
- ② 115V DUPLEX, 230V OUTLET
- ③ 34 WATT SURFACE MTD. FLUORESCENT LIGHT
- ④ 22" DEEP SHELF
- * 3" OVERHANG EXTERIOR MEMBRANE ROOF
- * 1- HEAVY DUTY ALUMINIUM DOOR W/HALF GLASS AND ADA HANDLES
- * GLAZING- CLEAR TEMPERED GLASS
- * ALUMINIUM TREAD PLATE FLOOR
- * UL LABEL FOR COMPLIANCE WITH THE N.E.C.



STANDARD FEATURES DESIGNED INTO BOOTH TO MEET ADA GUIDELINES.
 * MANEUVER WITHIN BOOTH - 60" DIAMETER
 * DOOR CLEARANCES - 32" CLEAR OPENING, 1/2" HIGH THRESHOLD
 * SHELF - 32" A.F.F.
 * CASHIER WINDOW - 33" A.F.F.
 * CEILING HEIGHT - 80" min.
 (ACCESSIBLE ROUTE TO BOOTH - BOOTH CAN BE DESIGNED TO MEET ON SITE CONDITIONS, EXAMPLE: DOOR LOCATION AND THRESHOLD HEIGHT)



ELEVATION A

NOTES:
 SLIDING DOORS AVAILABLE BOTH SIDES - SUFFIX DSL
 CASHIER WINDOW AVAILABLE IN DOOR - SUFFIX CSL
 SWING DOOR AVAILABLE IN REAR OF BOOTH - SUFFIX SW

o2o
PORTA-KING BUILDING SYSTEMS

4133 SHORELINE DRIVE EARTH CITY, MISSOURI 63045
 1-800-456-5464 FAX 314-291-2857 www.portaking.com

TITLE: DURALUMINIUM MODEL DA8866SL