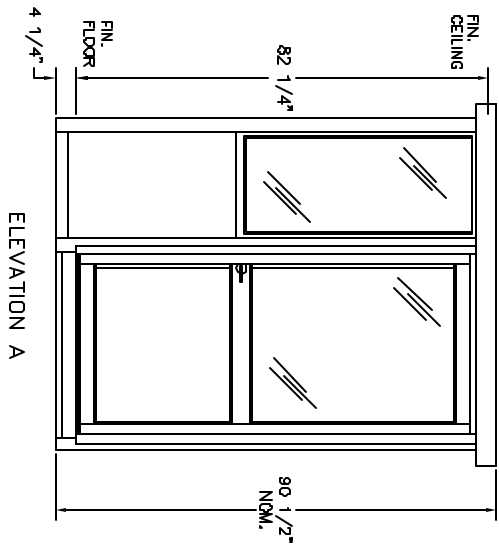


PLAN VIEW



ELEVATION A

DURALUMINIUM MODEL DA8866SW BUILDING NOTES :

- ① 100 AMP SINGLE PHASE 12 CIRCUIT LOAD CENTER W/MAIN BKR.
- ② 115V DUPLEX, 230V OUTLET
- ③ 34 WATT SURFACE MTD. FLUORESCENT LIGHT
- ④ 22" DEEP SHELF
- * 3" OVERHANG EXTERIOR MEMBRANE ROOF
- * 1- HEAVY DUTY ALUMINIUM DOOR W/HALF GLASS AND LEVER LOCK
- * GLAZING- CLEAR TEMPERED GLASS
- * ALUMINIUM TREAD PLATE FLOOR
- * UL LABEL FOR COMPLIANCE WITH THE N.E.C.



STANDARD FEATURES DESIGNED INTO BOOTH TO MEET ADA GUIDELINES.

- * MANEUVER WITHIN BOOTH- 60" DIAMETER
- * DOOR CLEARANCES- 32" CLEAR OPENING, 1/2" HIGH THRESHOLD
- * SHELF- 32" A.F.F.
- * CASHIER WINDOW- 33" A.F.F.
- * CEILING HEIGHT- 80" min.

(ACCESSIBLE ROUTE TO BOOTH- BOOTH CAN BE DESIGNED TO MEET ON SITE CONDITIONS, EXAMPLE: DOOR LOCATION AND THRESHOLD HEIGHT)

NOTES:

SLIDING DOORS AVAILABLE BOTH SIDES- SUFFIX DSL
 CASHIER WINDOW AVAILABLE IN DOOR- SUFFIX CSL

PORTA-KING BUILDING SYSTEMS

4133 SHORELINE DRIVE EARTH CITY, MISSOURI 63045
 1-800-456-5464 FAX 314-291-2857 www.portaking.com

TITLE DURALUMINIUM MODEL DA8866SW