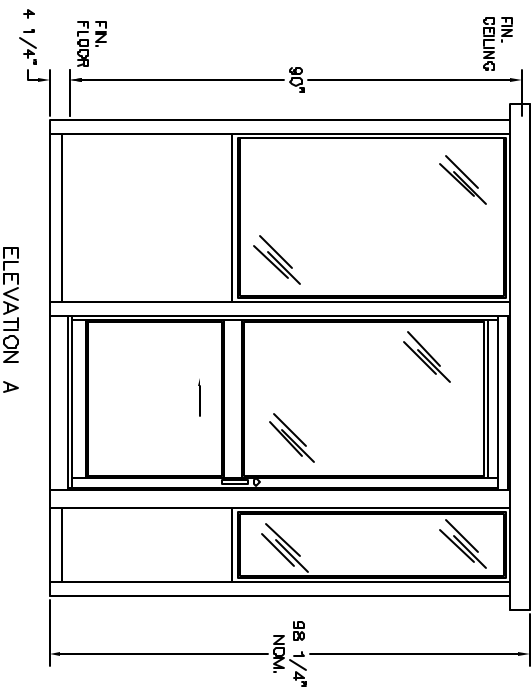


PLAN VIEW

NOTE : CLEAR  
DOOR OPENING  
TO BE 32"

A



ELEVATION A

DURALUMINUM MODEL 9664SL BUILDING NOTES :

- ① 100 AMP SINGLE PHASE 12 CIRCUIT LOAD CENTER W/MAIN BKR.
- ② 115V DUPLEX, 230V OUTLET
- ③ 34 WATT SURFACE MTD. FLUORESCENT LIGHT
- ④ 22" DEEP SHELF
- \* 3" OVERHANG EXTERIOR MEMBRANE ROOF
- \* 1- HEAVY DUTY ALUMINUM DOOR W/HALF GLASS AND ADA HANDLES
- \* GLAZING- CLEAR TEMPERED GLASS
- \* ALUMINUM TREAD PLATE FLOOR
- \* UL LABEL FOR COMPLIANCE WITH THE N.E.C.

NOTES:  
SLIDING DOORS AVAILABLE BOTH SIDES - SUFFIX DSL  
CASHIER WINDOW AVAILABLE IN DOOR - SUFFIX CSL  
SWING DOOR AVAILABLE IN REAR OF BOOTH - SUFFIX SW

*portaking*  
**PORTA-KING BUILDING SYSTEMS**

4133 SHORELINE DRIVE EARTH CITY, MISSOURI 63045  
1-800-456-5464 FAX 314-291-2857 www.portaking.com

TITLE

DURALUMINUM MODEL 9664SL