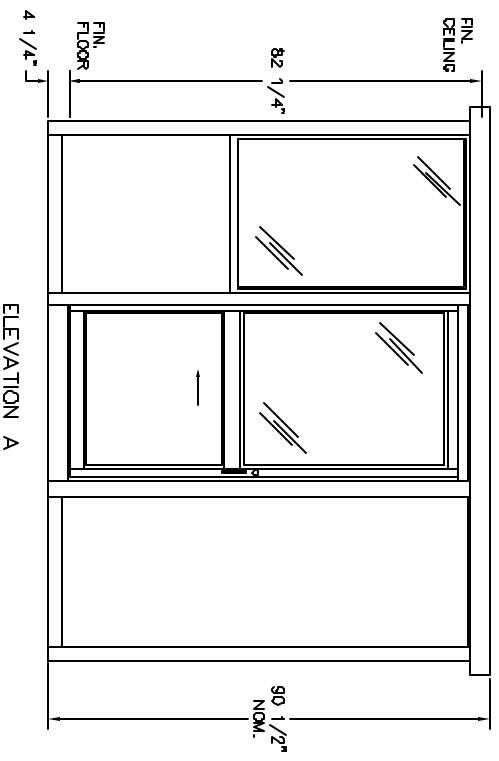


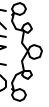
PLAN VIEW  
A

DURALUMINIUM MODEL R10864SL BUILDING NOTES :

- ① 100 AMP SINGLE PHASE 12 CIRCUIT LOAD CENTER W/MAIN BKR.
- ② 115V DUPLEX, 230V OUTLET
- ③ 34 WATT SURFACE MTD. FLUORESCENT LIGHT
- ④ 22" DEEP SHELF
- \* 3" OVERHANG EXTERIOR MEMBRANE ROOF
- \* 1- HEAVY DUTY ALUMINIUM DOOR W/HALF GLASS AND ADA HANDLES
- \* 1- HEAVY DUTY ALUMINIUM DOOR (SOLID) W/ADA HANDLES
- \* GLAZING- CLEAR TEMPERED GLASS
- \* ALUMINIUM TREAD PLATE FLOOR
- \* UL LABEL FOR COMPLIANCE WITH THE N.E.C.



NOTES:  
SLIDING DOORS AVAILABLE BOTH SIDES- SUFFIX DSL  
CASHIER WINDOW AVAILABLE IN DOOR- SUFFIX CSL

  
**PORTA-KING** BUILDING SYSTEMS

4133 SHORELINE DRIVE      EARTH CITY, MISSOURI 63045  
 1-800-456-5464      FAX 314-291-2857      www.portaking.com

TITLE      DURALUMINIUM MODEL R10864SL