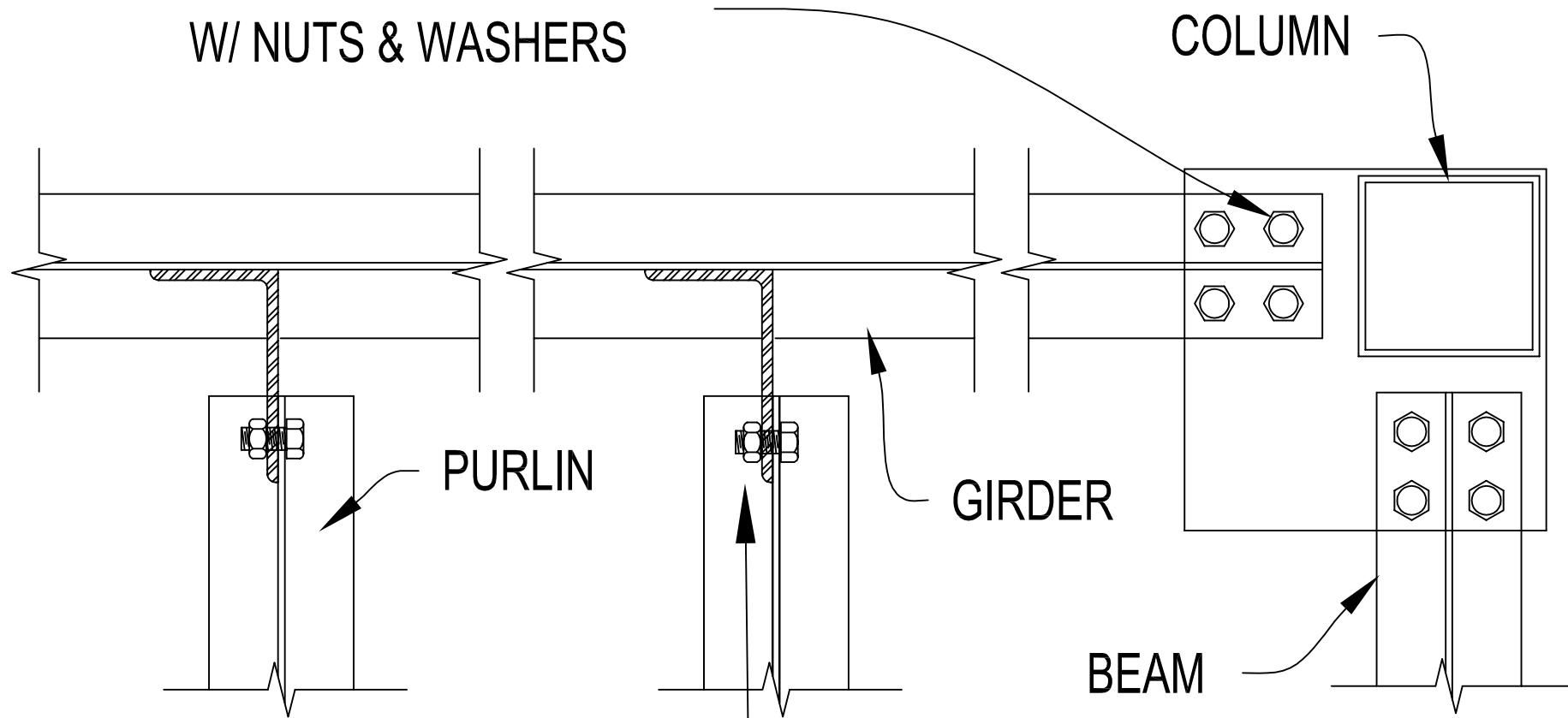


5/8" X 1 3/4" A325 BOLTS
W/ NUTS & WASHERS



5/8" X 1 3/4" A325 BOLTS, NUTS,
WASHER, & LOAD INDICATING WASHER.
FOR PURLIN TO GIRDER CONNECTION
ONLY. SEE LOAD INDICATING WASHER
DETAIL FOR INSTALLATION.

NOTE:

- INSTALL ALL BEAMS ON THE
SAME SIDE OF THE CONNECTION
CLIPS UNLESS OTHERWISE NOTED.

FULL MOMENT COLUMN / BEAM CONNECTION