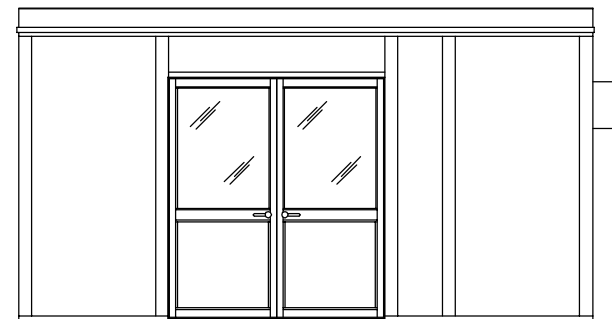


ELEVATION C



ELEVATION D

3" VERSAKING BUILDING NOTES:

- 72lf-3" VERSAKING WALL PANELS
- GLAZING-CLEAR TEMPERED SAFETY GLASS
- 1-3068 HEAVY DUTY ALUMINUM DOOR w/GLASS & LEVER LOCK
- 1-6068 HEAVY DUTY ALUMINUM DOOR w/GLASS
- 320sf-1 1/2" ROOF DECKING
- 16lf-ROOF DECK SUPPORT BEAM
- 320sf-STD. ACOUSTICAL CEILING SYSTEM
- 8-RECESSED LIGHT FIXTURE (LESS BULBS)
- 1-LIGHT SWITCH (A)
- 6-115V 15AMP DUPLEX OUTLET (B)
- 1-HVAC SINGLE OUTLET (C)
- 1-THRU-WALL HVAC
- 1-100AMP LOAD CENTER

portaking
PORTA-KING BUILDING SYSTEMS

4133 SHORELINE DRIVE EARTH CITY, MISSOURI 63045
1-800-456-5464 FAX 314-291-2857 www.portaking.com

TITLE MODULAR 3" VERSAKING, 16'x20' - 8' HIGH. (4-WALL)