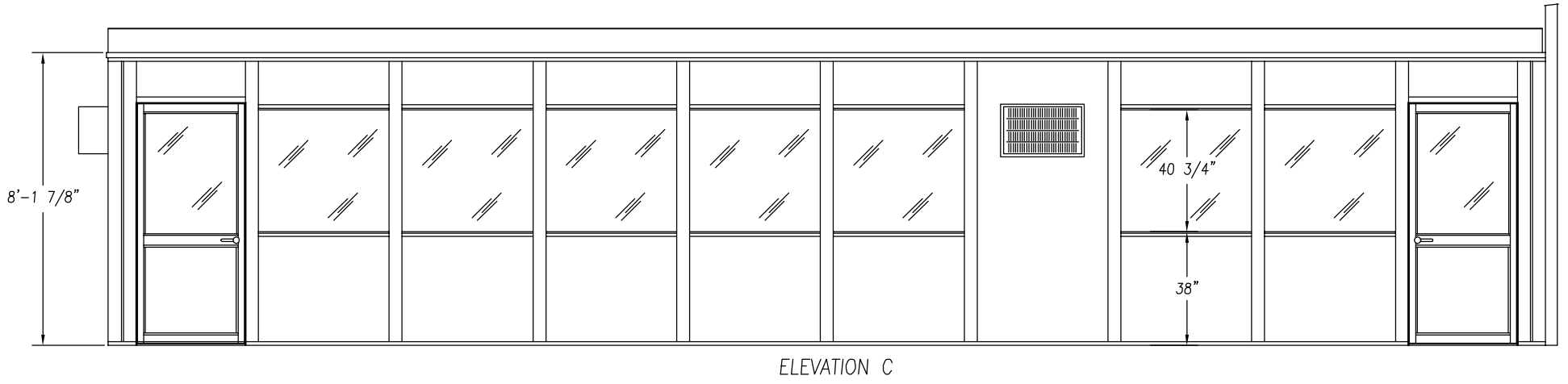


- 3" VERSAKING BUILDING NOTES:**
- 64lf-3" VERSAKING WALL PANELS
 - GLAZING-CLEAR TEMPERED SAFETY GLASS
 - 2-3068 HEAVY DUTY ALUMINUM DOOR w/GLASS & LEVER LOCK
 - 960sf-1 1/2" ROOF DECKING
 - 64lf-ROOF DECK SUPPORT ANGLE
 - 2-3"x3" STEEL COLUMN WITH 8"x8" BASE PLATE
 - 40lf-ROOF DECK SUPPORT BEAM
 - 960sf-STD. ACOUSTICAL CEILING SYSTEM
 - 18-RECESSED LIGHT FIXTURE (LESS BULBS)
 - 2-3-WAY LIGHT SWITCH (E)
 - 7-115V 15AMP DUPLEX OUTLET (B)
 - 2-HVAC SINGLE OUTLET (C)
 - 2-THRU-WALL HVAC
 - 1-100AMP LOAD CENTER



PORTA-KING BUILDING SYSTEMS

4133 SHORELINE DRIVE EARTH CITY, MISSOURI 63045
 1-800-456-5464 FAX 314-291-2857 www.portaking.com

TITLE MODULAR 3" VERSAKING, 24'x40' - 8' HIGH. (2-WALL)