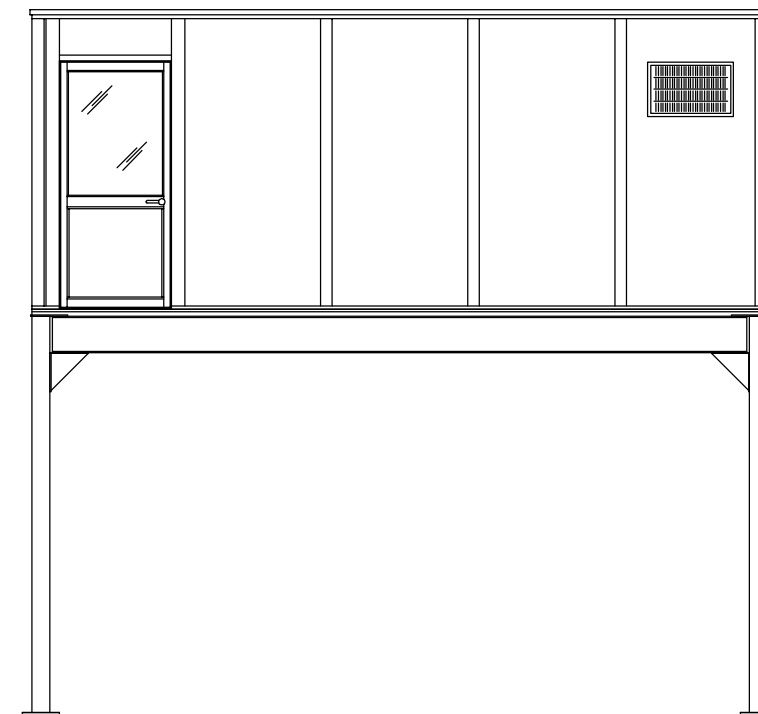
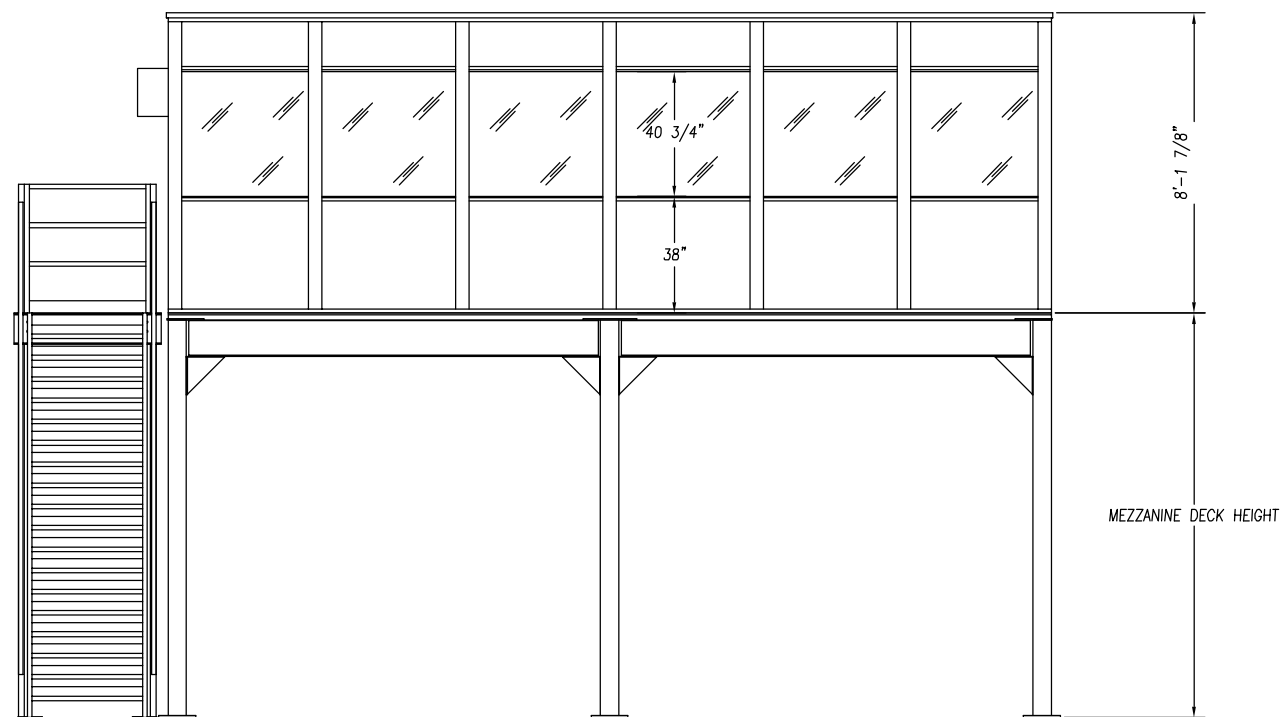


PLAN VIEW



ELEVATION D



ELEVATION C

- 3" VERSAKING BUILDING NOTES:
 88lf-3" VERSAKING WALL PANELS
 GLAZING-CLEAR TEMPERED SAFETY GLASS
 1-3068 HEAVY DUTY ALUMINUM DOOR w/GLASS & LEVER LOCK
 480sf-1 1/2" ROOF DECKING
 20lf-ROOF DECK SUPPORT BEAM
 480sf-STD. ACOUSTICAL CEILING SYSTEM
 8-RECESSED LIGHT FIXTURE (LESS BULBS)
 1-LIGHT SWITCH (A)
 8-115V 15AMP DUPLEX OUTLET (B)
 1-HVAC SINGLE OUTLET (C)
 1-THRU-WALL HVAC
 1-100AMP LOAD CENTER

PORTA-KING BUILDING SYSTEMS

4133 SHORELINE DRIVE EARTH CITY, MISSOURI 63045
 1-800-456-5464 FAX 314-291-2857 www.portaking.com

TITLE MODULAR 3" VERSAKING, 20'x24' - 8' HIGH ON MEZZANINE