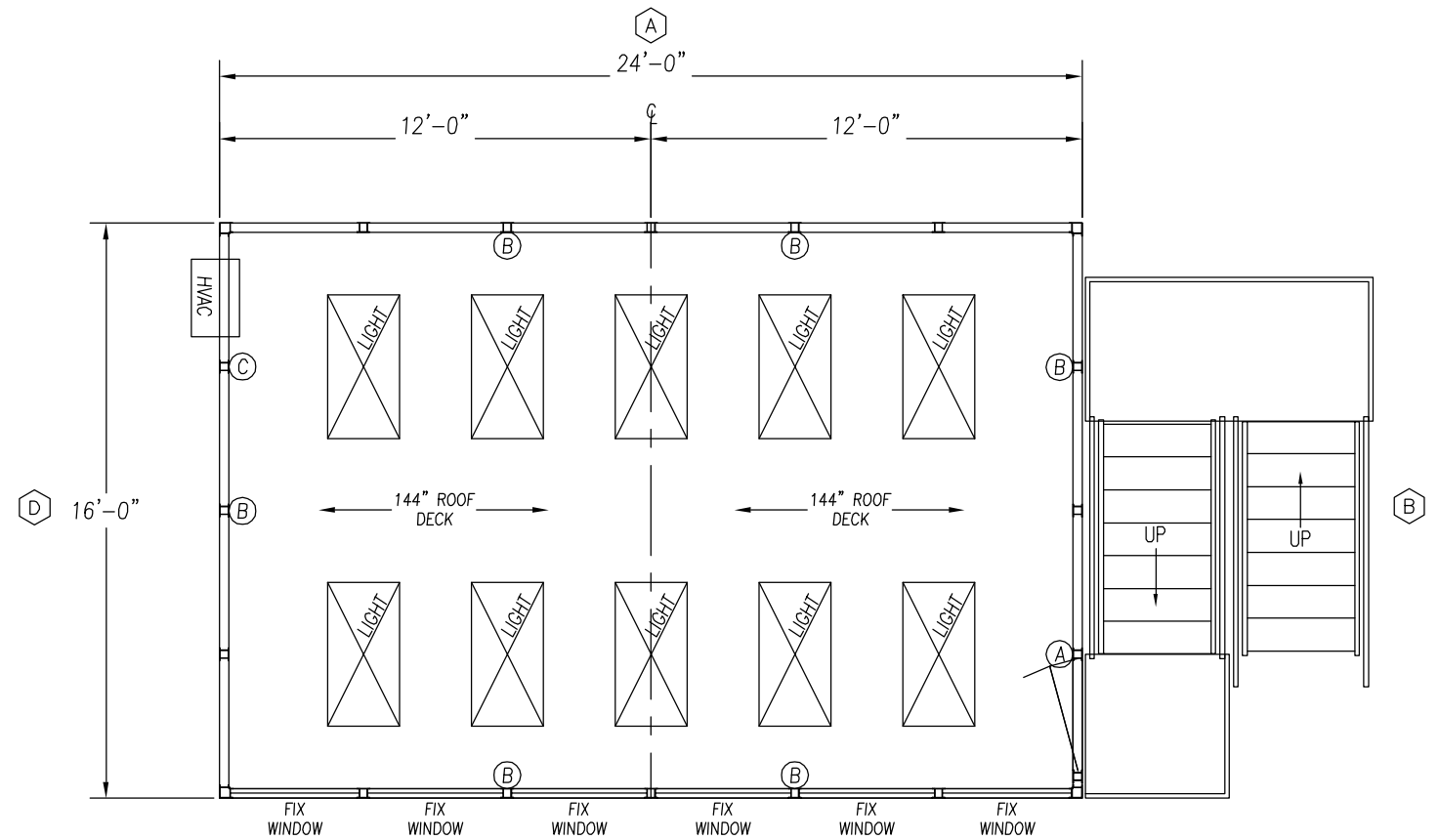
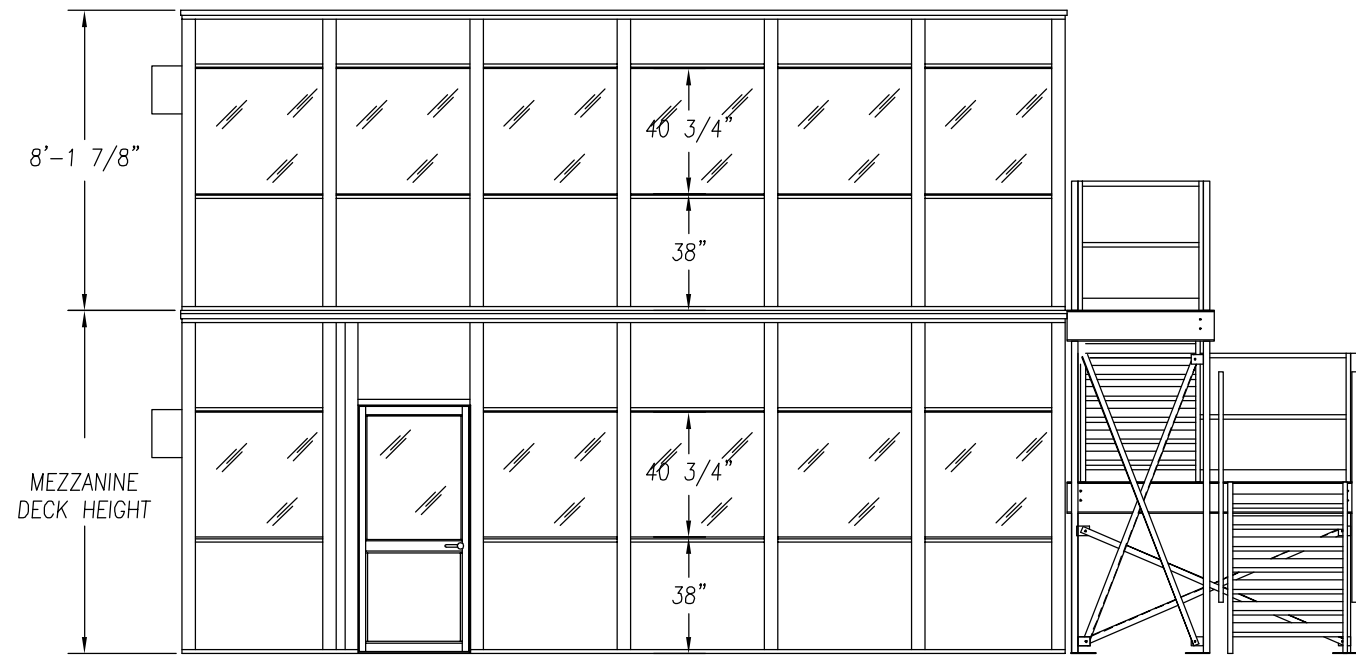


PLAN VIEW LOWER LEVEL



PLAN VIEW UPPER LEVEL



ELEVATION C

- 3" VERSAKING BUILDING NOTES:  
 160lf-3" VERSAKING WALL PANELS  
 GLAZING-CLEAR TEMPERED SAFETY GLASS  
 2-3068 HEAVY DUTY ALUMINUM DOOR w/GLASS & LEVER LOCK  
 320sf-1 1/2" ROOF DECKING (UPPER LEVEL)  
 16lf-ROOF DECK SUPPORT BEAM  
 640sf-STD. ACOUSTICAL CEILING SYSTEM  
 20-RECESSED LIGHT FIXTURE (LESS BULBS)  
 2-LIGHT SWITCH (A)  
 12-115V 15AMP DUPLEX OUTLET (B)  
 2-HVAC SINGLE OUTLET (C)  
 2-THRU-WALL HVAC  
 1-100AMP LOAD CENTER  
 1-MEZZANINE WITH STAIR & LANDING

PORTA-KING BUILDING SYSTEMS

4133 SHORELINE DRIVE EARTH CITY, MISSOURI 63045  
 1-800-456-5464 FAX 314-291-2857 www.portaking.com

TITLE MODULAR 3" VERSAKING, 2-STORY 16'x24' WITH MEZZANINE