

2"x2" ANCHOR TAB
w/ 5/8" DIA. HOLE
(TYP. 4)

NOTE: CLEAR
DOOR OPENING
TO BE 32"

6"x12" CONDUIT
ACCESS CUTOUT

IMPORTANT NOTE- VERIFY BOOTH
DESIGN IS COMPATIBLE WITH ON
SITE CONDITIONS FOR PROPER
ACCESSIBILITY.

PLAN VIEW

DURASTEEL MODEL DA75SL BUILDING NOTES:

- ①- 100 AMP SINGLE PHASE 12 CIRCUIT LOAD CENTER W/MAIN BKR.
- ②- 115V DUPLEX, 230V OUTLET
- ③- 34 WATT SURFACE MTD. FLUORESCENT LIGHT W/SWITCH
- ④- 22" DEEP SHELF
- * 3" OVERHANG EXTERIOR MEMBRANE ROOF
- * 1- HEAVY DUTY ALUMINUM DOOR w/HALF GLASS AND ADA HANDLES
- * GLAZING- CLEAR TEMPERED GLASS
- * INSULATION- WALLS R-10, CEILING R-19
- * ALUMINUM TREAD PLATE FLOOR
- * BUILDING PAINTED- ADVISE COLOR
- * UL LABEL FOR COMPLIANCE WITH THE N.E.C.

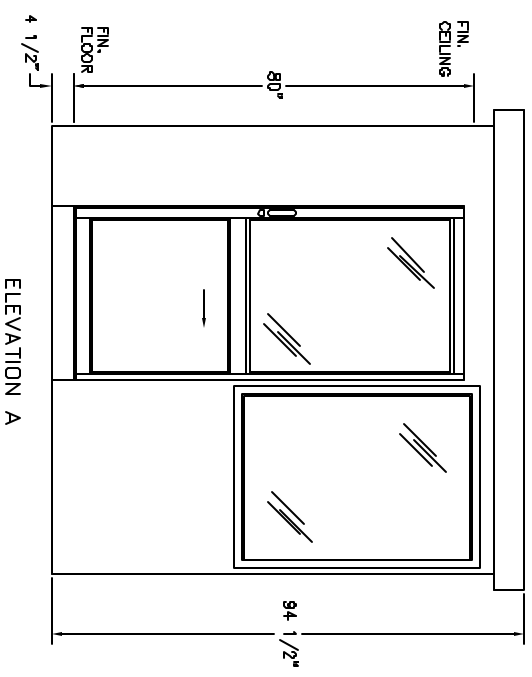


STANDARD FEATURES DESIGNED INTO BOOTH TO MEET ADA GUIDELINES.


- * MANEUVER WITHIN BOOTH- 60" DIAMETER
- * DOOR CLEARANCES- 32" CLEAR OPENING, 1/2" HIGH THRESHOLD
- * SHELF- 32" A.F.F.
- * CASHIER WINDOW- 33" A.F.F.
- * CEILING HEIGHT- 80" min.

(ACCESSIBLE ROUTE TO BOOTH- BOOTH CAN BE DESIGNED TO MEET ON SITE CONDITIONS, EXAMPLE: DOOR LOCATION AND THRESHOLD HEIGHT)

NOTES:
SLIDING DOORS AVAILABLE BOTH SIDES- SUFFIX DSL
CASHIER WINDOW AVAILABLE IN DOOR- SUFFIX CSL
SWING DOOR AVAILABLE IN REAR OF BOOTH- SUFFIX SW



ELEVATION A


PORTA-KING BUILDING SYSTEMS

4133 SHORELINE DRIVE EARTH CITY, MISSOURI 63045
 1-800-456-5464 FAX 314-291-2857 www.portaking.com

TITLE DURASTEEL MODEL DA75SL