

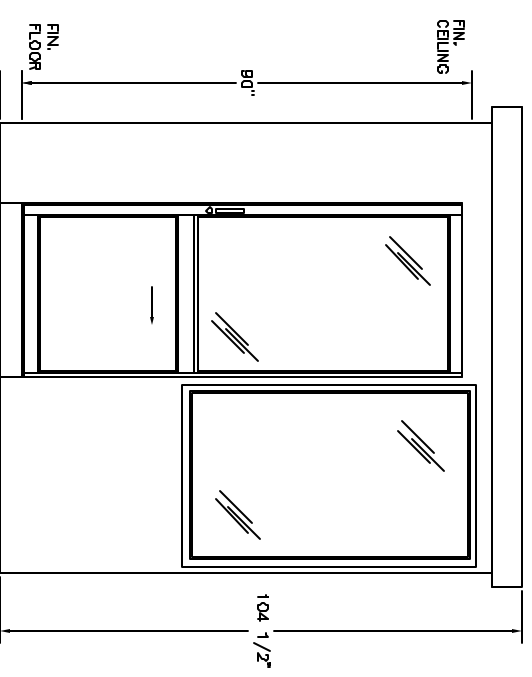
IMPORTANT NOTE- VERIFY BOOTH DESIGN IS COMPATIBLE WITH ON SITE CONDITIONS FOR PROPER ACCESSIBILITY.

PLAN VIEW

DURASTEEL MODEL DA75SL BUILDING NOTES :

- ① 100 AMP SINGLE PHASE 12 CIRCUIT LOAD CENTER W/MAIN BKR.
- ② 115V DUPLEX, 230V OUTLET
- ③ 34 WATT SURFACE MTD. FLUORESCENT LIGHT W/SWITCH
- ④ 22" DEEP SHELF
- * 3" OVERHANG EXTERIOR MEMBRANE ROOF
- * 1- HEAVY DUTY ALUMINUM DOOR W/HALF GLASS AND ADA HANDLES
- * GLAZING- CLEAR TEMPERED GLASS
- * INSULATION- WALLS R-10, CEILING R-19
- * ALUMINUM TREAD PLATE FLOOR
- * BUILDING PAINTED- ADVISE COLOR
- * UL LABEL FOR COMPLIANCE WITH THE N.E.C.

2"x2" ANCHOR TAB W/ 5/8" DIA. HOLE (TYP. 4)



ELEVATION A




STANDARD FEATURES DESIGNED INTO BOOTH TO MEET ADA GUIDELINES.

- * MANEUVER WITHIN BOOTH- 60" DIAMETER
- * DOOR CLEARANCES- 32" CLEAR OPENING, 1/2" HIGH THRESHOLD
- * SHELF- 32" A.F.F.
- * CASHIER WINDOW- 33" A.F.F.
- * CEILING HEIGHT- 80" min.

(ACCESSIBLE ROUTE TO BOOTH- BOOTH CAN BE DESIGNED TO MEET ON SITE CONDITIONS, EXAMPLE: DOOR LOCATION AND THRESHOLD HEIGHT)

NOTES:

- SLIDING DOORS AVAILABLE BOTH SIDES- SUFFIX DSL
- CASHIER WINDOW AVAILABLE IN DOOR- SUFFIX CSL
- SWING DOOR AVAILABLE IN REAR OF BOOTH- SUFFIX SW


PORTA-KING BUILDING SYSTEMS

4133 SHORELINE DRIVE EARTH CITY, MISSOURI 63045
 1-800-456-5464 FAX 314-291-2857 www.portaking.com

TITLE: DURASTEEL MODEL DA75SL