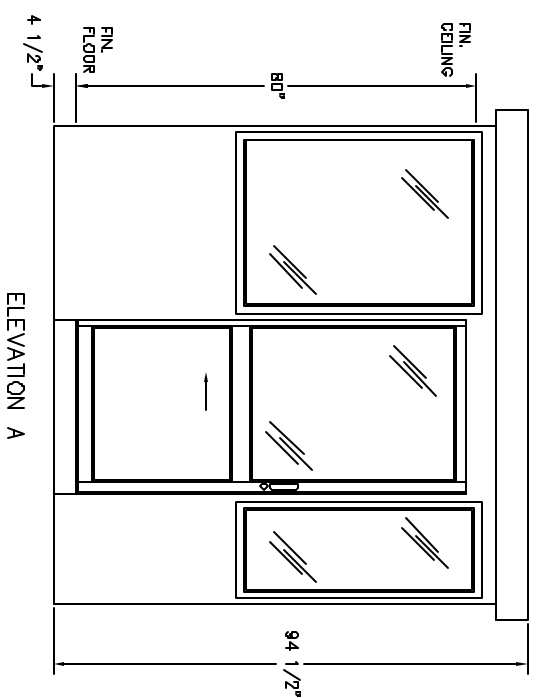


PLAN VIEW

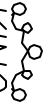
2" x 2" ANCHOR TAB  
w/ 5/8" DIA. HOLE  
(TYP. 4)



DURASTEEL MODEL 84SL BUILDING NOTES :

- ① 100 AMP SINGLE PHASE 12 CIRCUIT LOAD CENTER W/MAIN BKR.
- ② 115V DUPLEX, 230V OUTLET
- ③ 34 WATT SURFACE MTD. FLUORESCENT LIGHT W/SWITCH
- ④ 22" DEEP SHELF
- \* 3" OVERHANG EXTERIOR MEMBRANE ROOF
- \* 1- HEAVY DUTY ALUMINUM DOOR W/HALF GLASS AND ADA HANDLES
- \* GLAZING- CLEAR TEMPERED GLASS
- \* INSULATION- WALLS R-10, CEILING R-19
- \* ALUMINUM TREAD PLATE FLOOR
- \* BUILDING PAINTED- ADVISE COLOR
- \* UL LABEL FOR COMPLIANCE WITH THE N.E.C.

NOTES:  
 SLIDING DOORS AVAILABLE BOTH SIDES- SUFFIX DSL  
 CASHIER WINDOW AVAILABLE IN DOOR- SUFFIX CSL  
 SWING DOOR AVAILABLE IN REAR OF BOOTH- SUFFIX SW

  
**PORTA-KING** BUILDING SYSTEMS

4133 SHORELINE DRIVE      EARTH CITY, MISSOURI 63045  
 1-800-456-5464      FAX 314-291-2857      www.portaking.com

TITLE      DURASTEEL MODEL 84SL