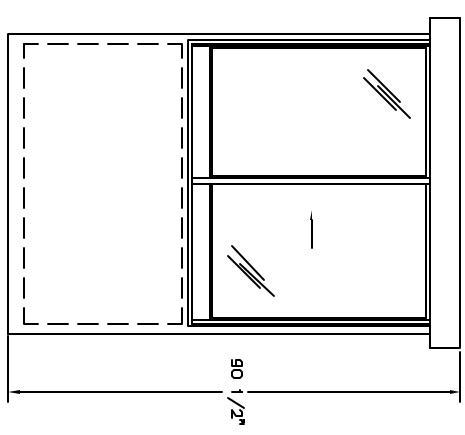
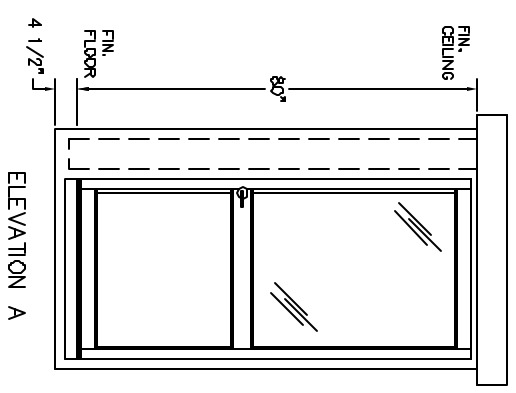
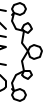


DURASTEEL MODEL PC-54SW BUILDING NOTES :

- ① 100 AMP SINGLE PHASE 12 CIRCUIT LOAD CENTER W/MAIN BKR.
 - ② 115V DUPLEX, 230V OUTLET
 - ③ 34 WATT SURFACE MTD. FLUORESCENT LIGHT
 - ④ 22" DEEP SHELF
- * 3" OVERHANG EXTERIOR MEMBRANE ROOF
 - * 1- HEAVY DUTY ALUMINUM DOOR w/HALF GLASS AND LEVER LOCK
 - * GLAZING- CLEAR TEMPERED GLASS
 - * INSULATION- WALLS R-9, CEILING R-17
 - * ALUMINUM TREAD PLATE FLOOR
 - * BUILDING PAINTED- ADVISE COLOR
 - * UL LABEL FOR COMPLIANCE WITH THE N.E.C.





PORTA-KING BUILDING SYSTEMS

4133 SHORELINE DRIVE EARTH CITY, MISSOURI 63045
 1-800-456-5464 FAX 314-291-2857 www.portaking.com

TITLE DURASTEEL MODEL PC-54SW