

IMPORTANT NOTE - VERIFY BOOTH DESIGN IS COMPATIBLE WITH ON SITE CONDITIONS FOR PROPER ACCESSIBILITY.

PLAN VIEW

DURASTEEL MODEL PC-DA75SW BUILDING NOTES :

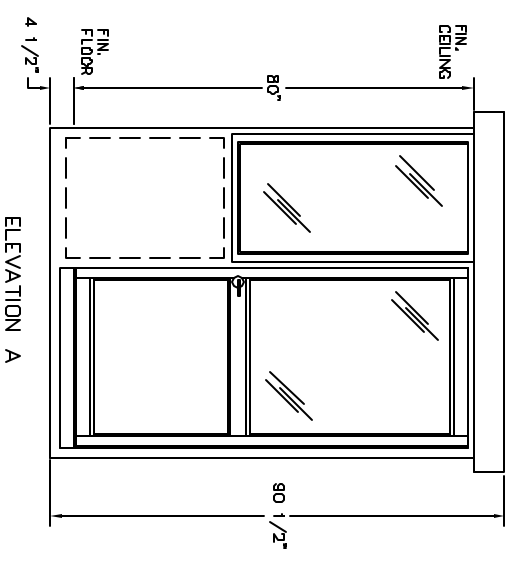
- ① - 100 AMP SINGLE PHASE 12 CIRCUIT LOAD CENTER W/MAIN BKR.
- ② - 115V DUPLEX, 230V OUTLET
- ③ - 34 WATT SURFACE MTD. FLUORESCENT LIGHT W/SWITCH
- ④ - 22" DEEP SHELF
- * 3" OVERHANG EXTERIOR MEMBRANE ROOF
- * 1 - HEAVY DUTY ALUMINUM DOOR W/HALF GLASS AND LEVER LOCK
- * GLAZING - CLEAR TEMPERED GLASS
- * INSULATION - WALLS R-9, CEILING R-17
- * ALUMINUM TREAD PLATE FLOOR
- * BUILDING PAINTED - ADVISE COLOR
- * UL LABEL FOR COMPLIANCE WITH THE N.E.C.



STANDARD FEATURES DESIGNED INTO BOOTH TO MEET ADA GUIDELINES.

- * MANEUVER WITHIN BOOTH - 60" DIAMETER
- * DOOR CLEARANCES - 32" CLEAR OPENING, 1/2" HIGH THRESHOLD
- * SHELF - 32" A.F.F.
- * CASHIER WINDOW - 33" A.F.F.
- * CEILING HEIGHT - 80" min.

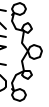
(ACCESSIBLE ROUTE TO BOOTH - BOOTH CAN BE DESIGNED TO MEET ON SITE CONDITIONS, EXAMPLE: DOOR LOCATION AND THRESHOLD HEIGHT)



2"x2" ANCHOR TAB
W/ 5/8" DIA. HOLE
(TYP. 4)

NOTE: CLEAR DOOR OPENING TO BE 33 1/2"

ELEVATION A


PORTA-KING BUILDING SYSTEMS
 4133 SHORELINE DRIVE EARTH CITY, MISSOURI 63045
 1-800-456-5464 FAX 314-291-2857 www.portaking.com

DURASTEEL MODEL PC-DA75SW