

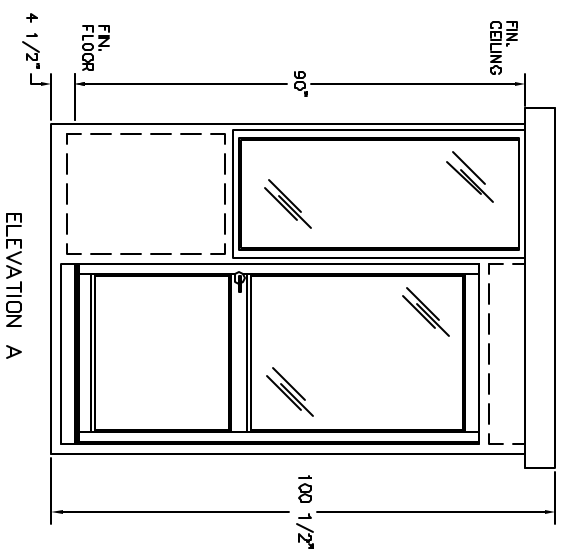
2"  $\phi$  HOLE IN SHELF (TYP. 2)

IMPORTANT NOTE - VERIFY BOOTH DESIGN IS COMPATIBLE WITH ON SITE CONDITIONS FOR PROPER ACCESSIBILITY.

PLAN VIEW

**DURASTEEL MODEL PC-DAT75SW BUILDING NOTES :**

- ① 100 AMP SINGLE PHASE 12 CIRCUIT LOAD CENTER W/MAIN BKR.
- ② 115V DUPLEX, 230V OUTLET
- ③ 34 WATT SURFACE MTD. FLUORESCENT LIGHT W/SWITCH
- ④ 22" DEEP SHELF
- \* 3" OVERHANG EXTERIOR MEMBRANE ROOF
- \* 1- HEAVY DUTY ALUMINUM DOOR W/HALF GLASS AND LEVER LOCK
- \* GLAZING- CLEAR TEMPERED GLASS
- \* INSULATION- WALLS R-9, CEILING R-17
- \* ALUMINUM TREAD PLATE FLOOR
- \* BUILDING PAINTED- ADVISE COLOR
- \* UL LABEL FOR COMPLIANCE WITH THE N.E.C.



ELEVATION A



STANDARD FEATURES DESIGNED INTO BOOTH TO MEET ADA GUIDELINES.

- \* MANEUVER WITHIN BOOTH - 60" DIAMETER
- \* DOOR CLEARANCES - 32" CLEAR OPENING, 1/2" HIGH THRESHOLD
- \* SHELF - 32" A.F.F.
- \* CASHIER WINDOW - 33" A.F.F.
- \* CEILING HEIGHT - 80" min.

(ACCESSIBLE ROUTE TO BOOTH - BOOTH CAN BE DESIGNED TO MEET ON SITE CONDITIONS, EXAMPLE: DOOR LOCATION AND THRESHOLD HEIGHT)

**PORTA-KING BUILDING SYSTEMS**

4133 SHORELINE DRIVE  
 1-800-456-5464 FAX 314-291-2857 www.portaking.com

EARTH CITY, MISSOURI 63045

TITLE DURASTEEL MODEL PC-DAT75SW