

IMPORTANT NOTE - VERIFY BOOTH DESIGN IS COMPATIBLE WITH ON SITE CONDITIONS FOR PROPER ACCESSIBILITY.

PLAN VIEW

DURASTEEL MODEL PC-DA75SL BUILDING NOTES:

- ① - 100 AMP SINGLE PHASE 12 CIRCUIT LOAD CENTER W/MAIN BKR.
- ② - 115V DUPLEX, 230V OUTLET
- ③ - 34 WATT SURFACE MTD. FLUORESCENT LIGHT W/SWITCH
- ④ - 22" DEEP SHELF
- \* 3" OVERHANG EXTERIOR MEMBRANE ROOF
- \* 1 - HEAVY DUTY ALUMINUM DOOR W/HALF GLASS AND ADA HANDLES
- \* GLAZING - CLEAR TEMPERED GLASS
- \* INSULATION - WALLS R-9, CEILING R-17
- \* ALUMINUM TREAD PLATE FLOOR
- \* BUILDING PAINTED - ADVISE COLOR
- \* UL LABEL FOR COMPLIANCE WITH THE N.E.C.



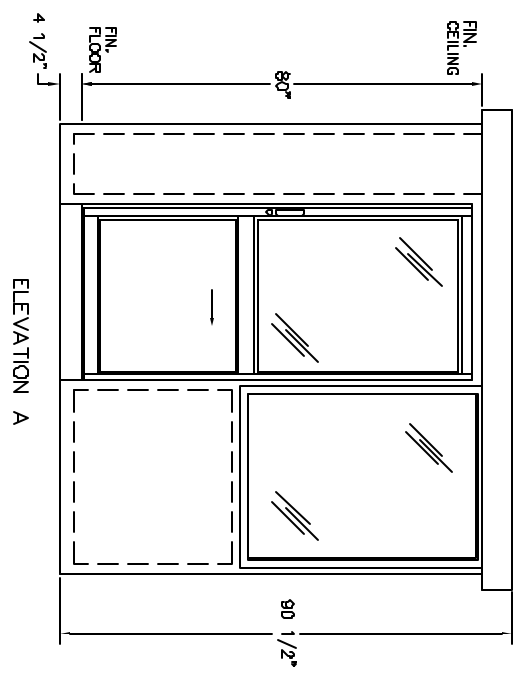
STANDARD FEATURES DESIGNED INTO BOOTH TO MEET ADA GUIDELINES.

- \* MANEUVER WITHIN BOOTH - 60" DIAMETER
  - \* DOOR CLEARANCES - 32" CLEAR OPENING, 1/2" HIGH THRESHOLD
  - \* SHELF - 32" A.F.F.
  - \* CASHIER WINDOW - 33" A.F.F.
  - \* CEILING HEIGHT - 80" min.
- (ACCESSIBLE ROUTE TO BOOTH - BOOTH CAN BE DESIGNED TO MEET ON SITE CONDITIONS, EXAMPLE: DOOR LOCATION AND THRESHOLD HEIGHT)

NOTES:

- SLIDING DOORS AVAILABLE BOTH SIDES - SUFFIX DSL
- CASHIER WINDOW AVAILABLE IN DOOR - SUFFIX CSL
- SWING DOOR AVAILABLE IN REAR OF BOOTH - SUFFIX SW

2"x2" ANCHOR TAB  
W/ 5/8" DIA. HOLE  
(TYP. 4)



ELEVATION A

|   |                            |
|---|----------------------------|
|   |                            |
| <b>PORTA-KING BUILDING SYSTEMS</b>  |                            |
| 4133 SHORELINE DRIVE<br>1-800-456-5464 FAX 314-291-2857 www.portaking.com | EARTH CITY, MISSOURI 63045 |
| TITLE DURASTEEL MODEL PC-DA75SL   |                            |