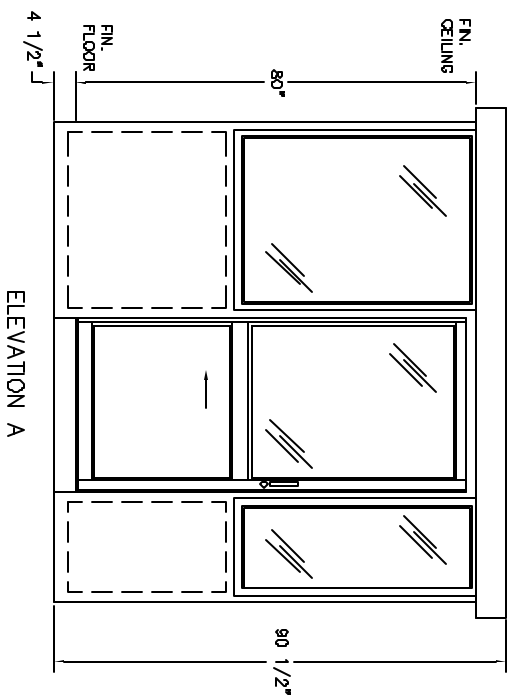


PLAN VIEW

DURASTEEL MODEL PC-88SL BUILDING NOTES :


- ① 100 AMP SINGLE PHASE 12 CIRCUIT LOAD CENTER W/MAIN BKR.
- ② 115V DUPLEX, 230V OUTLET
- ③ 64 WATT SURFACE MTD. FLUORESCENT LIGHT
- ④ 22" DEEP SHELF

- * 5" OVERHANG EXTERIOR MEMBRANE ROOF
- * 1- HEAVY DUTY ALUMINUM DOOR W/HALF GLASS AND ADA HANDLES
- * GLAZING- CLEAR TEMPERED GLASS
- * INSULATION- WALLS R-9, CEILING R-17
- * ALUMINUM TREAD PLATE FLOOR
- * BUILDING PAINTED- ADVISE COLOR
- * UL LABEL FOR COMPLIANCE WITH THE N.E.C.



ELEVATION A

NOTES:
 DOORS AVAILABLE BOTH SIDES- SUFFIX DSL
 SLIDING WINDOW AVAILABLE IN DOOR- SUFFIX CSL
 CASHIER WINDOW AVAILABLE IN DOOR- SUFFIX CSL
 SWING DOOR AVAILABLE IN REAR OF BOOTH- SUFFIX SW


PORTA-KING BUILDING SYSTEMS
 4133 SHORELINE DRIVE
 1-800-456-5464 FAX 314-291-2857 www.portaking.com
 EARTH CITY, MISSOURI 63045

TITLE DURASTEEL MODEL PC-88SL