

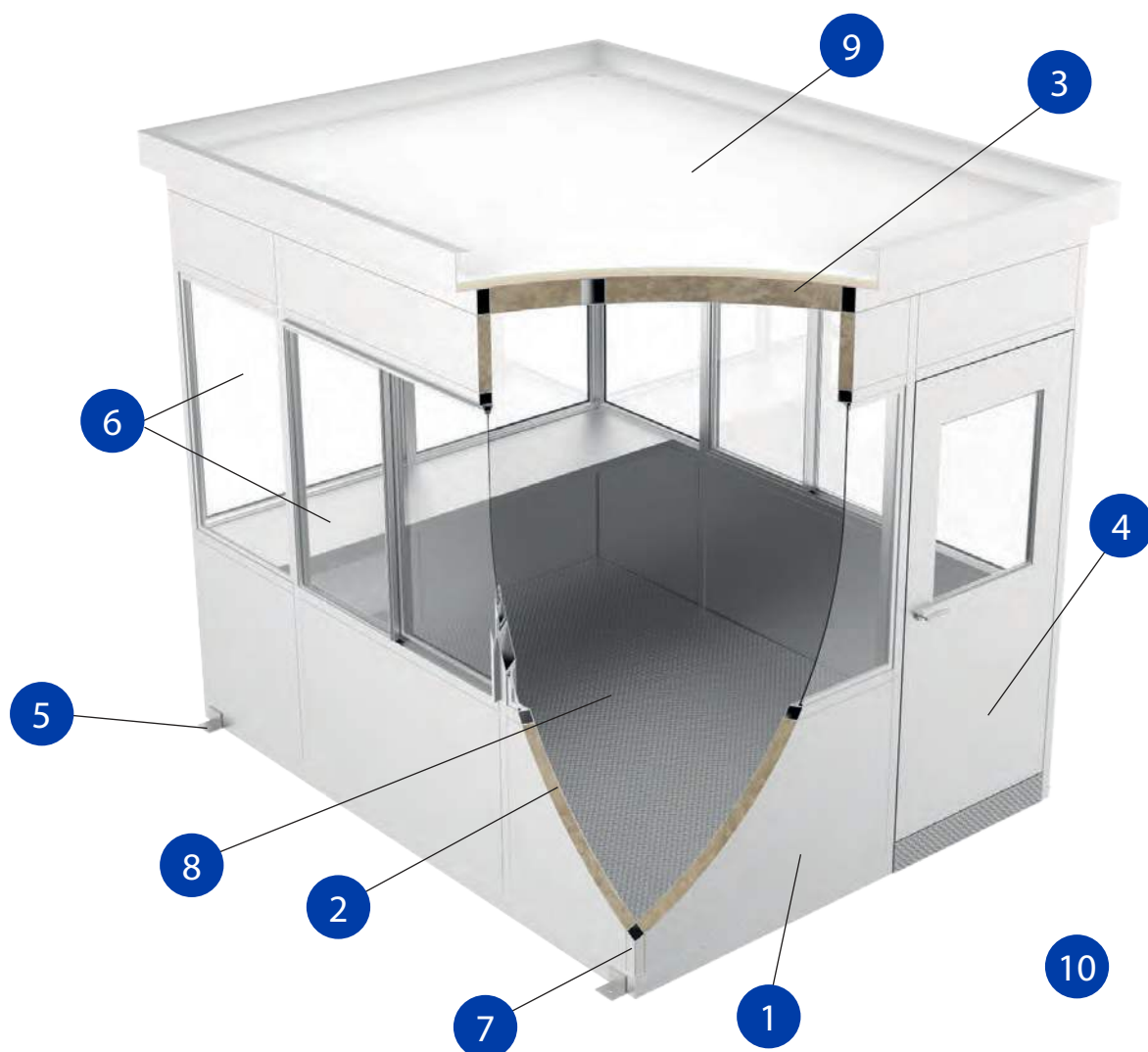
DURASTEEL GUARD BUILDINGS

Heavy duty, very durable, welded steel structures designed to provide 24/7 protection for security personnel and the equipment they use. Time tested design features and superior fit and finish are the trademark of every Durasteel Guard Building.



CUSTOM DESIGNS

Each guard building is custom designed from the base frame to the roof. All steel components used to create your Durasteel guard building are fabricated and assembled at our Montgomery City, Missouri manufacturing facility. By building off-site at our factory we minimize the many on-site disruptions associated with conventional construction.



1. Heavy duty welded steel interior and exterior surfaces finished with a two-part polyurethane paint
2. Minimum 2" thick walls with an R-10 insulation
3. Minimum 6" insulation in the ceiling, R-19
4. High security steel or anodized aluminum doors, available in both swing and sliding type
5. Welded steel anchor tabs
6. Fixed or sliding windows with standard 3/16" tempered safety glass
7. Minimum 2"x2"x .120 structural ASTM A 500 Grade B welded steel tube framework
8. 1 1/2" solid insulated floor structure with a maintenance free aluminum diamond plate finished surface
9. Roof includes a finished coating consisting of a three-part, white, solar reflective, waterproof membrane
10. Electrical systems and lighting are factory installed and ready for on-site connection to the main power supply

In addition to these standard features, we offer an array of design options to address aesthetics, insulation values, glazing, electronics, ballistic ratings, interior build outs and more.

We offer the industry's most experienced team of designers, engineers, and fabricators who will work with you to create a custom guard booth to match your project specifications.

Our commitment to you is to provide a guard building that exceeds your expectations for style, function, and performance.

Form Follows Function

The images you see in this brochure are just a sampling of the hundreds of designs we have created for other security installations.





You can select from one of the many designs you see in this brochure or you can visit our website to view even more,
www.portaking.com/guard-booths



Multi-Piece Guard Buildings

Large guard buildings that are too wide or too long to ship as a single unit are constructed as independent modules that are transported to the jobsite and connected together to create the final design.



Architectural Features

We offer many design options to enhance the aesthetics of your guard booth. We incorporate quality materials and expert finish work to ensure these features look great and provide years of trouble-free performance.

Colonial

Our colonial design consists of a relief wall panel design, standing seam roof and window mullions. This design is very popular for installation in areas with historically significant architecture.



Reveals are a decorative relief incorporated into an otherwise flat surface. They can be added to both walls and roof fascia. This design feature can be oriented either horizontally or vertically or both to create the desired architectural effect. This design is very popular as a design option for guard buildings that will be used in conjunction with warehouses, factories, or other tilt up concrete structures.

Reveals



Add On Wall Treatments

Add on wall treatments like brick, stone or stainless steel can be installed at our factory or buildings can be prepped for on-site installation of masonry or stone to create an exact match to your building's architecture.



FIELD APPLIED STONE



FACTORY APPLIED BRICK



FIELD APPLIED BRICK

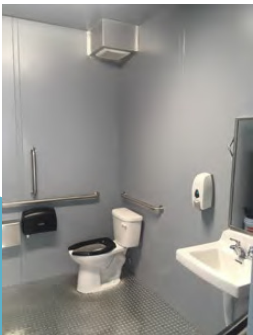


FACTORY APPLIED STONE



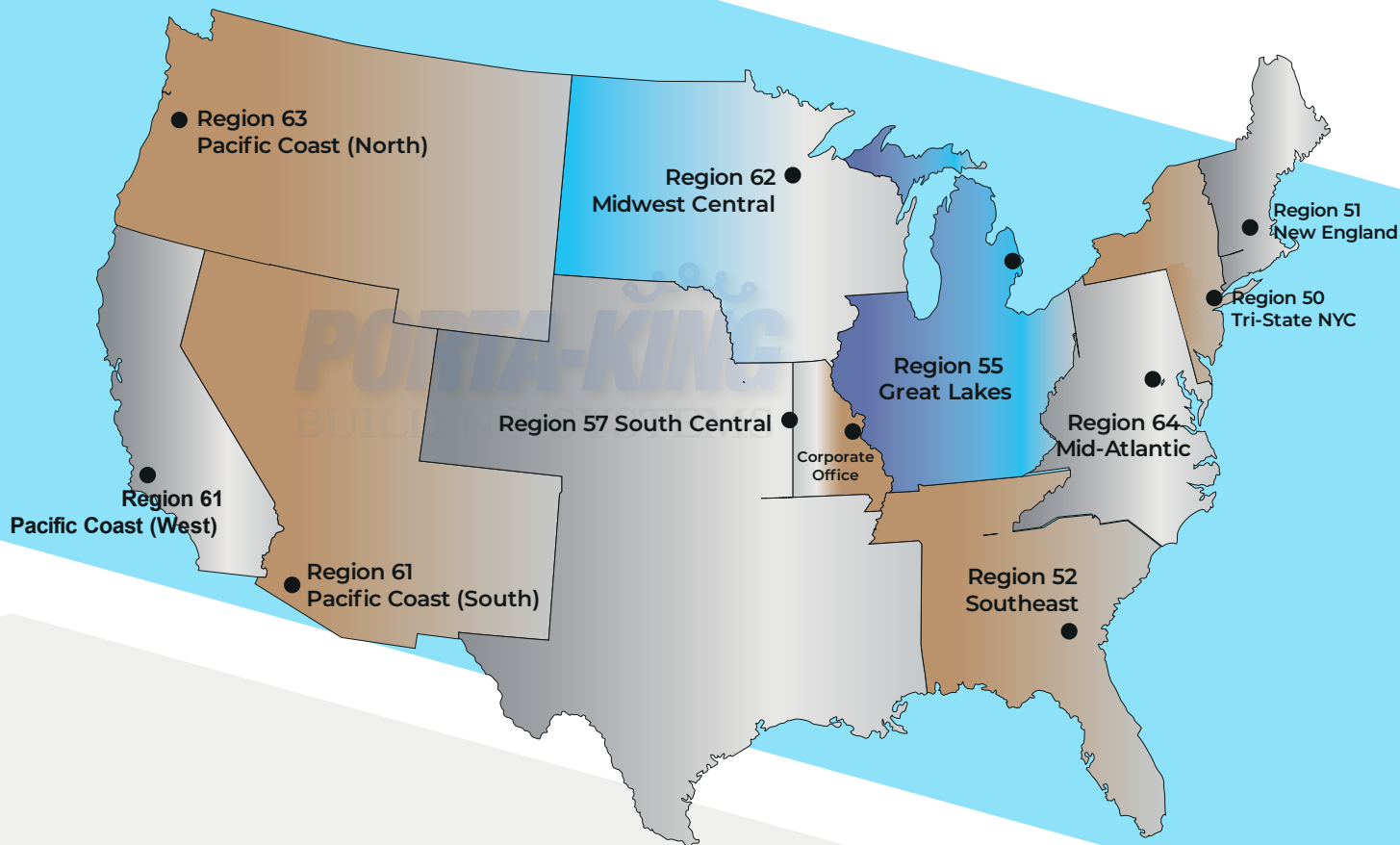
STAINLESS STEEL

We offer an assortment of interior buildout options to support 24/7 security operations.



Interior Buildouts

Popular options include cabinets, shelving, and counter tops along with custom electric to support a range of security equipment. Factory installed restrooms can also be included to further support security personnel comfort and safety.



● Denotes Porta-King Regional Sales Offices

Free on-site support before, during and
after the project is completed

www.portaking.com/resources/sales-regions

PORTA-KING
BUILDING SYSTEMS

Contact Us



1-800-284-5346



www.portaking.com



info@portaking.com



4133 Shoreline Drive
St. Louis, Missouri 63045