

MODULAR MACHINE AND EQUIPMENT ENCLOSURES

Our modular wall systems offer a fast, simple, functional, and affordable way to enclose equipment and machinery inside your facility. We offer free design assistance, site evaluations and product installation.

Why Invest in a Porta-King Modular Enclosure?

- Provide protection to prolong machinery lifespan
- Create a barrier to reduce sound transmission to protect personnel working around machinery
- Ensure a temperature and humidity-controlled environment for optimal equipment performance
- Protect equipment from vandalism or theft
- Shield personnel from potentially dangerous moving parts





MCC Enclosures



Laser Enclosures



Compressor Enclosures



Switchgear Enclosures



CMM Enclosures



Data Center Enclosures



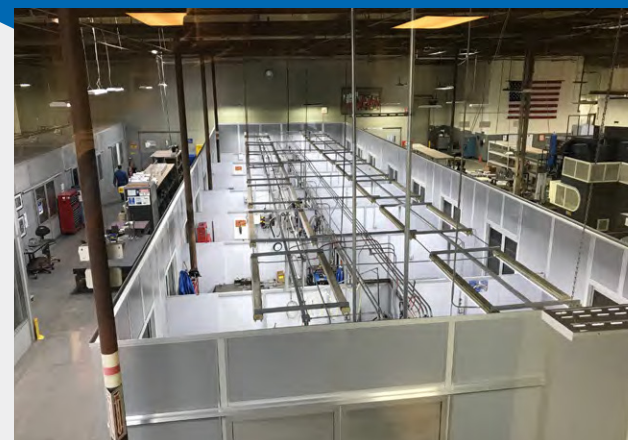
EBM Machine Enclosures



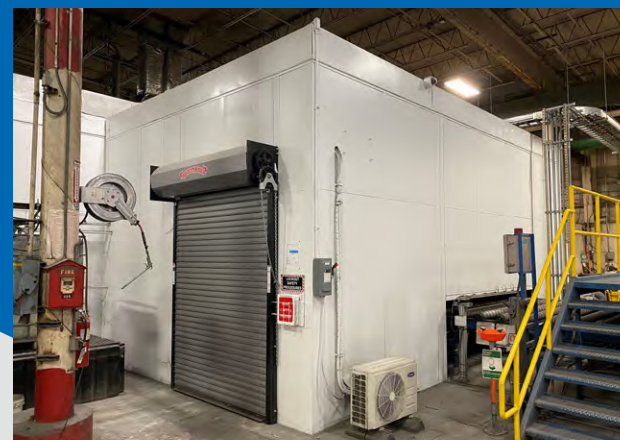
Sound Testing Enclosures



Manufacturing Cells



Welding Cells



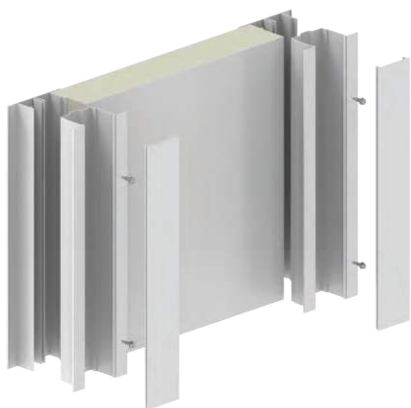
Product Testing Labs



3D Printer Enclosures

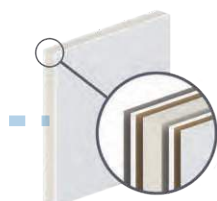
All enclosures are custom designed to meet your application's performance requirements. This includes a wide array of design options including:

- Panelized roof systems to enhance insulation value and maximize interior ceiling height
- Load bearing roofs to support air handlers or other equipment
- Single and double man doors with access control hardware
- Steel framed opening prepped to receive a variety of overhead door designs
- Removable door transoms and roof hatches to enable transfer of large material or equipment
- Framed wall cutouts for conveyor openings, wall grills and vents, ductwork and more
- Heating and cooling system, HEPA filters, exhaust fans or other environmental control equipment

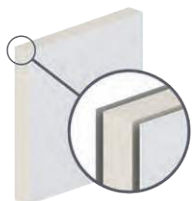


We use extruded aluminum posts to create a rigid framework for support of the walls and ceiling system. The superior fit and finish ensures a tight seal at every connection.

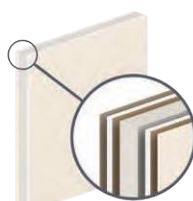
We offer a wide range of wall core compositions and panel finishes for impact resistance, insulation value, sound control, and code compliance. Here are a few of the more popular options:



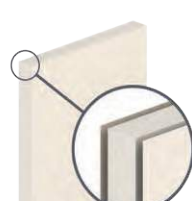
Painted Steel
Laminated to Drywall



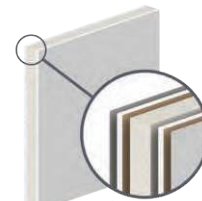
Painted Steel
Laminated to Polystyrene



Smooth FRP
Laminated to Drywall



Smooth FRP
Laminated to Polystyrene



Vinyl Covered Drywall
Laminated to Polystyrene