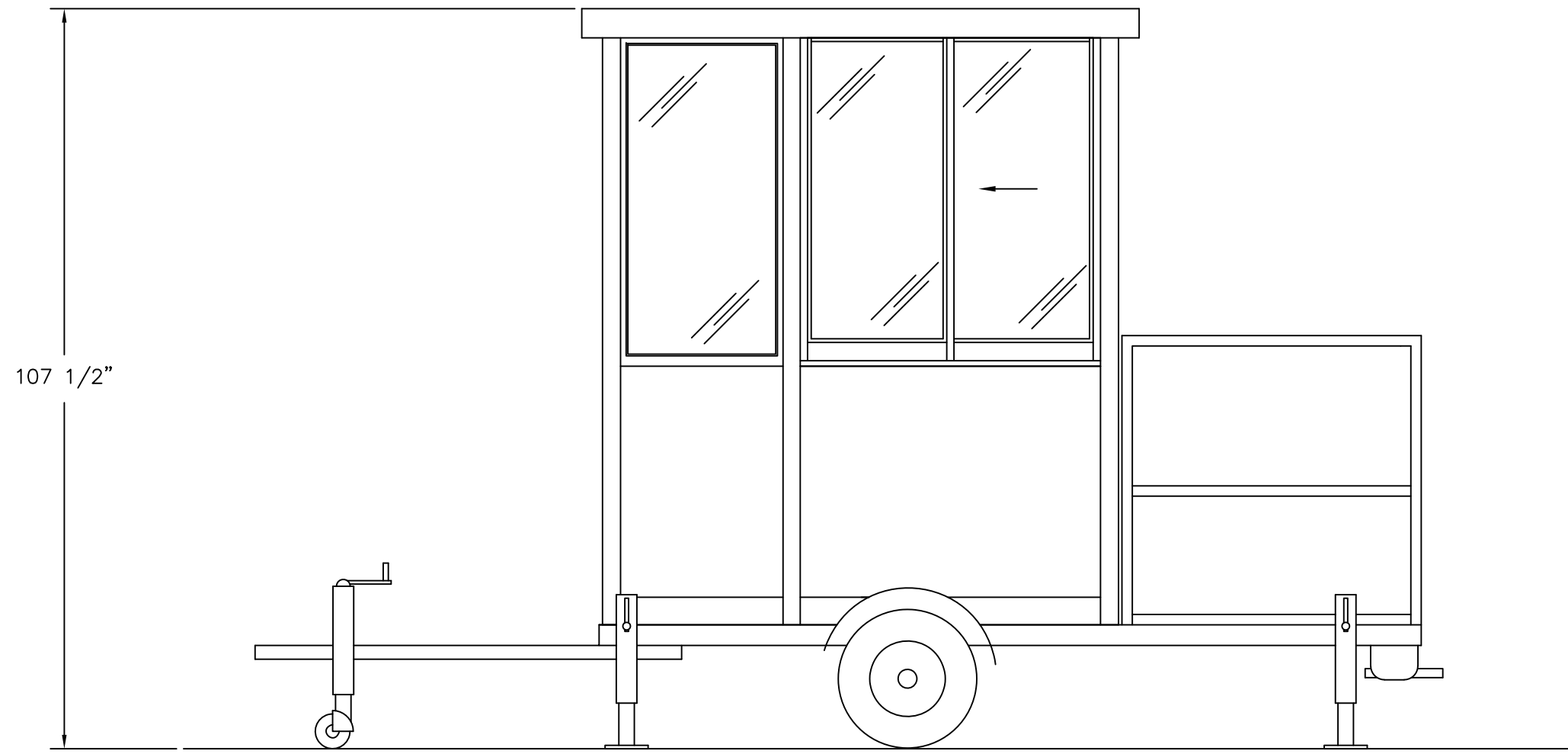


\* TRAILER: FRAMING TO MOUNT AND FASTEN BOOTH, TREADPLATE LANDING AND HANDRAIL, (1) SLIDE OUT STEP, (4) LEVELING JACKS, (2) RUNNING LIGHTS, FRONT TO INCLUDE CRANK DOWN TONGUE JACK WITH CASTOR AND 2" BALL HITCH w/ SAFETY CHAINS. TRAILER PAINTED BLACK

**PORTA-KING**  
BUILDING SYSTEMS

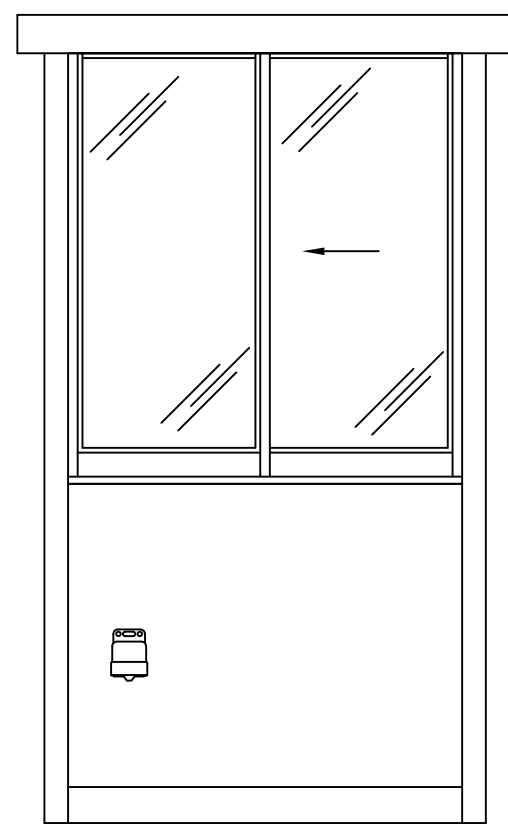
4133 SHORELINE DRIVE  
EARTH CITY, MO 63045  
1-800-456-5464  
www.portaking.com

TITLE: Security Booth 12 - Plan View

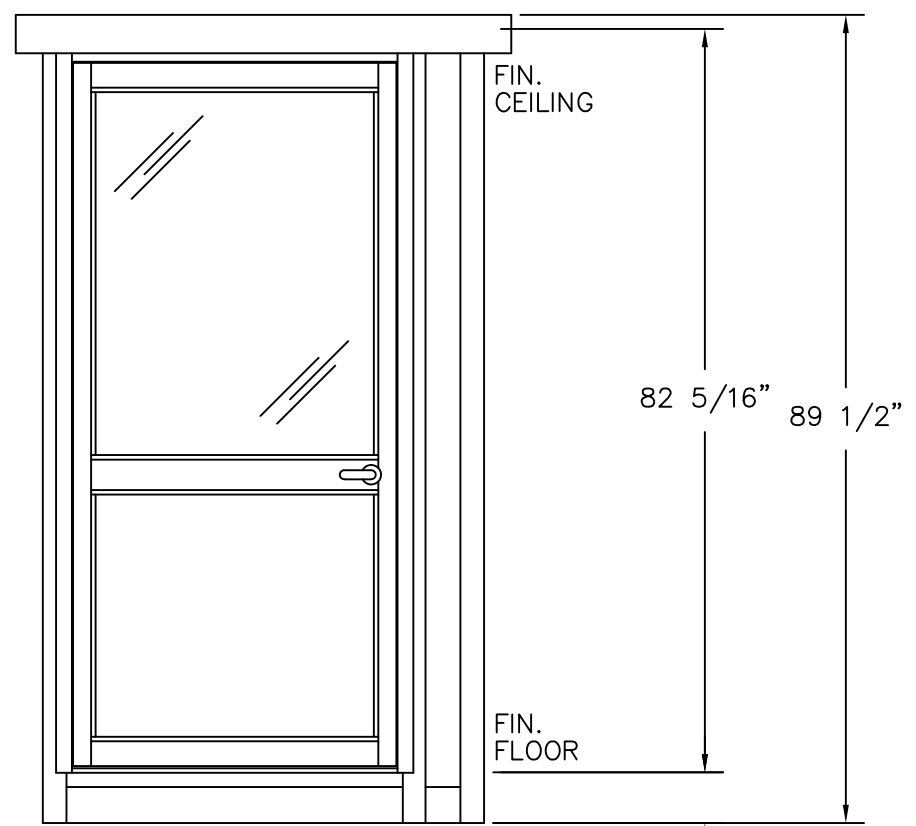


107 1/2"

ELEVATION C (A MIRRORED)



ELEVATION D



ELEVATION B

FIN.  
CEILING

82 5/16"

89 1/2"

FIN.  
FLOOR

5 5/8"

**PORTA-KING**  
BUILDING SYSTEMS

4133 SHORELINE DRIVE  
EARTH CITY, MO 63045  
1-800-456-5464  
www.portaking.com

TITLE: Security Booth 12 - Elevation View